





ELEGOO
Create The Future - Innovation At Your Fingertips

05

ELEGOO MARS



38°C

Print	Tool
Settings	Device info



Specification

<div>BUILD VOLUME</div> <div>153.36 x 77.76 x 165 mm³</div>	<div>LIGHT SOURCE</div> <div>COB Light Source (wavelength 405nm)</div>	<div>HEAT DISSIPATION METHOD</div> <div>3 copper heat pipes + single fan</div>	<div>POWER REQUIREMENTS</div> <div>100-240V 50/60Hz 24V 3A</div>
<div>PRINTING SPEED</div> <div>MAX 150mm/h</div>	<div>LCD SCREEN SIZE</div> <div>7-inch 9K Mono LCD</div>	<div>OPERATION SCREEN</div> <div>4.0-inch Capacitive Touch Screen</div>	<div>PRINTER DIMENSIONS</div> <div>260 x 268 x 451.5 mm³</div>
<div>LAYER THICKNESS</div> <div>0.01-0.2mm</div>	<div>LCD SCREEN PROTECTOR</div> <div>9H hardness tempered glass</div>	<div>LANGUAGES</div> <div>Chinese, English, Japanese, Dutch, Korean, French, German, Russian, Italian, Spanish, Turkish, Portuguese</div>	<div>NET WEIGHT</div> <div>8.8 kg</div>
<div>XY RESOLUTION</div> <div>18x18µm (8520x4320)</div>	<div>CONNECTION METHOD</div> <div>USB Interface & WiFi</div>	<div>AIR PURIFIER</div> <div>USB connection unavailable, compatible with Mars Mate air purifier</div>	<div>GROSS WEIGHT</div> <div>10.8 kg</div>
<div>Z AXIS ACCURACY</div> <div>0.02mm</div>	<div>SYSTEM</div> <div>EL3D-4.0</div>	<div>RESIN</div> <div>Supports most resins on the market (water-washable, standard, ABS-like, plant-based, etc.)</div>	
<div>PRINTING TECHNOLOGY</div> <div>MSLA</div>	<div>SLICER SOFTWARE</div> <div>Chitubox</div>	<div>OTHER FUNCTIONS</div> <div>Tilt Release Technology, One-Click Automatic Leveling, Self-Check & Overheat Protection, AI Camera (Empty Build Plate Detection, Warp Detection, Real-Time Monitoring, Time-Lapse Recording), Smart Mechanical Sensor (Resin Shortage Alarm, Residue Detection Alarm, Leveling Failure Alarm), Power-Loss Resume Printing.</div>	

Stunning 9K, True-to-Life

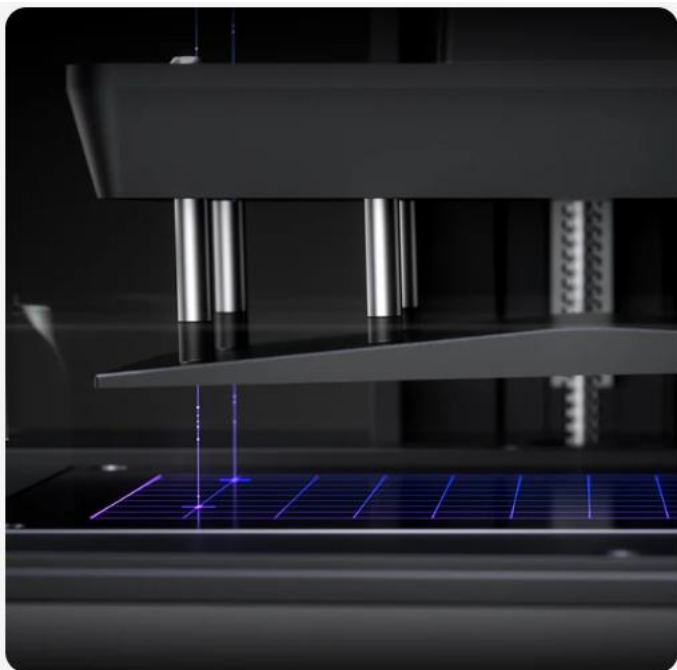
Featuring a 7" mono LCD with 9K ultra-high resolution and 18 μ m XY resolution, the Mars 5 Ultra ensures the faithful reproduction of every intricate detail with stunning fidelity and breathtaking textures. Boasting 92% light uniformity, the advanced COB light source ensures consistent results, bringing your visions to life with impeccable precision.



Real-Time Monitoring and Time-Lapse Photography

Effortlessly monitor the printing process in real-time, troubleshoot issues, and ensure exceptional print quality. Capture stunning time-lapse videos and share your creative journey with ease.





Self-Check & Automatic Leveling, Plug-N-Play

With its smart self-check and automatic leveling functions, the Mars 5 Ultra allows all skill levels to dive straight into the creative process. No more setup hassles or tedious calibrations – simply unbox, power on, and print.

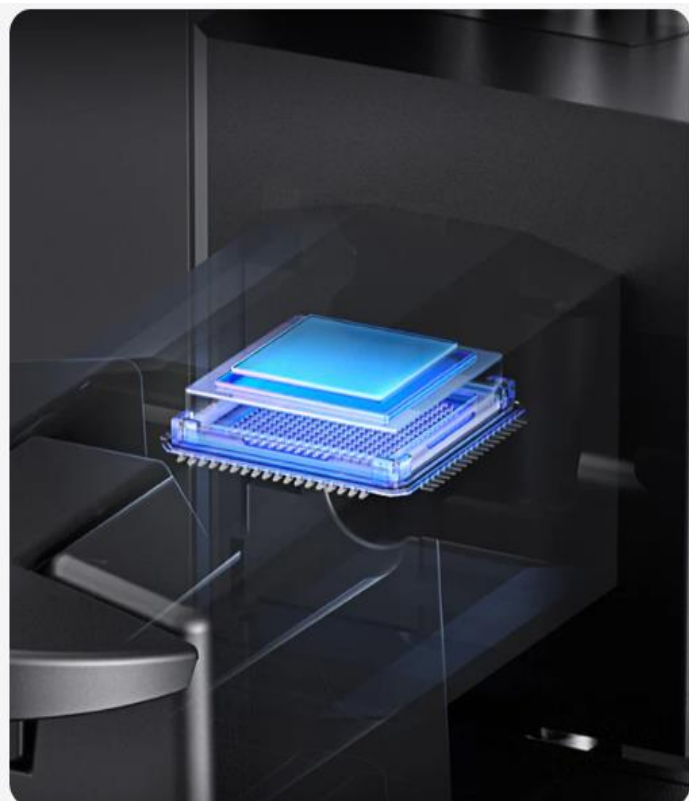
One-Click Self-Check

With one single click, the Mars 5 Ultra will perform a quick self-check to verify whether its components are functioning properly before printing. When the accumulated usage of the release film is approaching 60,000 times, the device will issue a reminder to replace the release film promptly.

*After replacing the release film, please click the refresh button on the device self-test page to reset the counter manually.

One-Click Automatic Leveling

Effortless precision is just a click away. Thanks to its intelligent mechanical sensor, the build plate can be automatically leveled with a simple click, making 3D printing accessible to users of all experience levels.



Print Smarter, Print Worry-Free

With a smart mechanical sensor, the Mars 5 Ultra supports residue detection to prevent damage to the LCD screen. Plus, timely alarms for resin shortages and leveling failures minimize waste and ensure uninterrupted efficiency. Stay worry-free and enjoy high-quality prints every time.



Advanced Overheat Protection

No more overheating worries. Enjoy carefree printing with the advanced high temperature protection. When the LED temperature exceeds 80°C, the intelligent system triggers an alarm and halts printing automatically, ensuring enhanced safety and extended lifespan.

AI Camera Acts as Your Eyes, Stay in Total Control

Say goodbye to costly failures and wasted time as the AI camera detects errors in real-time, guiding you to flawless results. Never worry about empty build plate or model warps again - it's a thing of the past. The AI camera monitors every step, instantly alerting you to any errors for immediate resolutions.





User-Friendly Design

Quick-Release Design, Easy Assembly

The quick-release design of the build plate enables effortless removal and installation, making cleaning and maintenance a breeze.

Replaceable Lock Screws, Resin Clog-Free

No more resin clogs hindering your creative flow with the replaceable resin tank lock screws. Enjoy uninterrupted printing perfection every time.

Dual Pour Spouts Resin Tank, Smooth Pouring

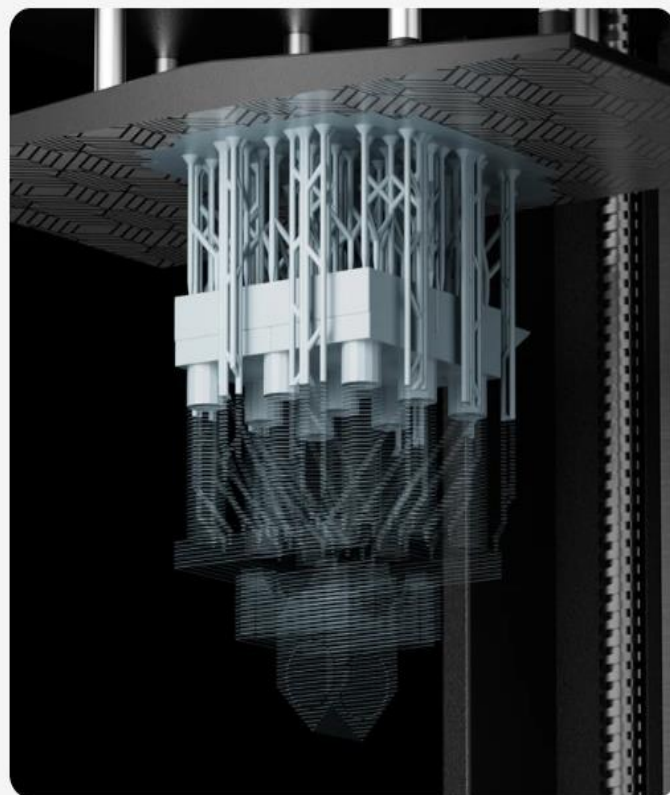
Double the convenience, double the speed. The resin tank features dual pour spouts, allowing for quick and easy loading and unloading, maximizing your efficiency.

Reliable Drip Tray, Clean and Safe

The reliable drip tray effectively prevents your resin from spilling, maintaining a clean workspace and enhancing safety. Enjoy a seamless printing experience without any messy surprises.

Power-Loss Resume Printing

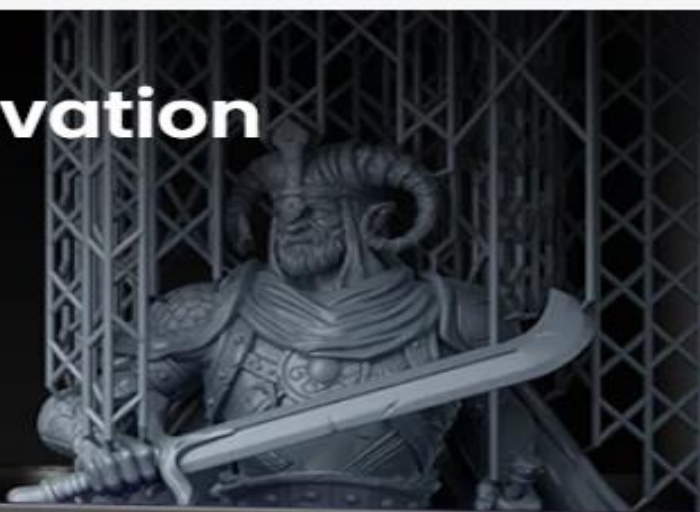
Power Outages? No Problem. The Mars 5 Ultra will automatically resume printing from where it stops. Say goodbye to wasted materials or time. Never again will you lose the printing progress.



**High Resolution of
8520x4320
XY Pixel Size of 18x18 μ m**



Tilt Release Innovation



Model by Flesh of Gods



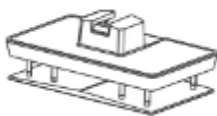
What's In Box



MARS 5 ULTRA 3D
PRINTER



WIFI ANTENNA



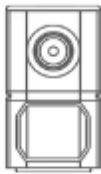
BUILD PLATE

[Buy Accessory >](#)



RESIN TANK

[Buy Accessory >](#)



AI CAMERA



RESIN TRAY



USB FLASH DISK



MASK



GLOVES



FUNNEL

[Buy Accessory >](#)



BACKUP SCREWS



USER MANUAL



ADAPTER



TOOL KIT



SCRAPER